

**Salvage List**  
Lounge Ground Floor

**Priority 1**

**Lounge**

**Priority 1**  
Man with Blue Jacket; Poste by Van Gough

450 mm

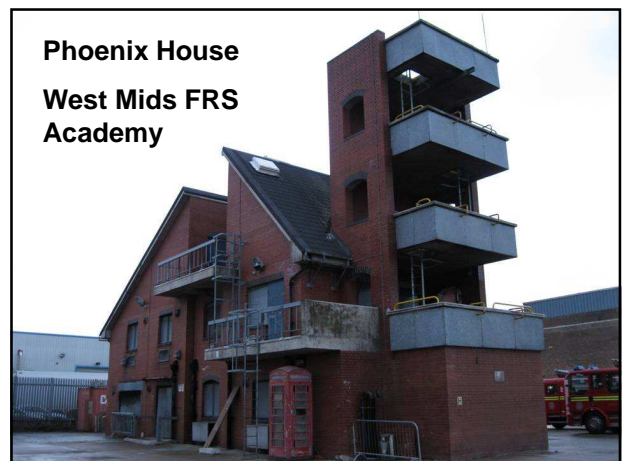
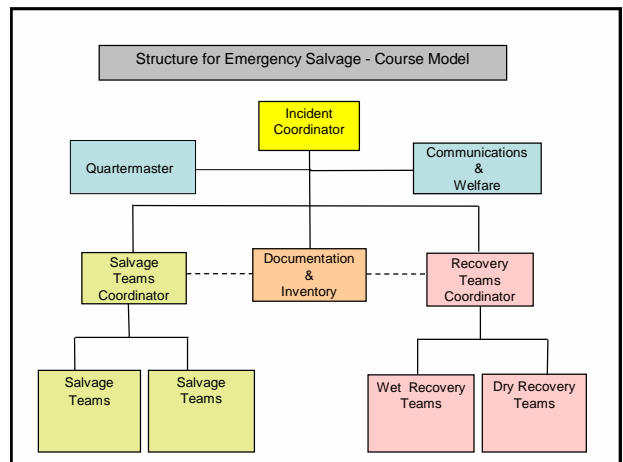
650 mm

Weight: Medium

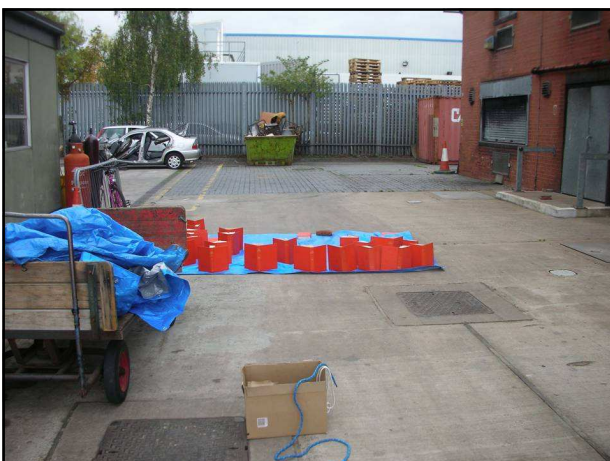
**REMOVAL**  
Wear Gloves  
Support base  
Do not touch painting surface

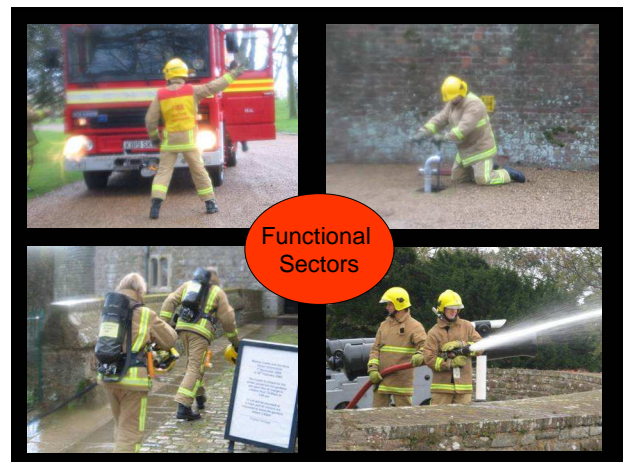
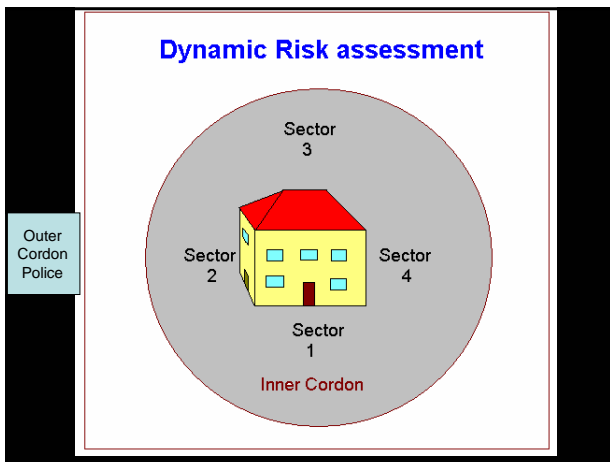
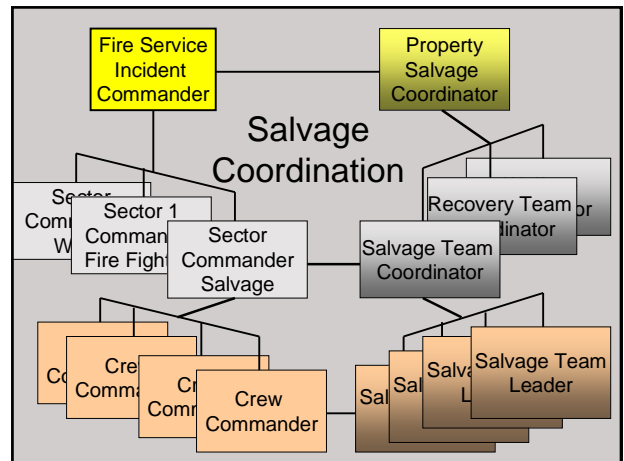
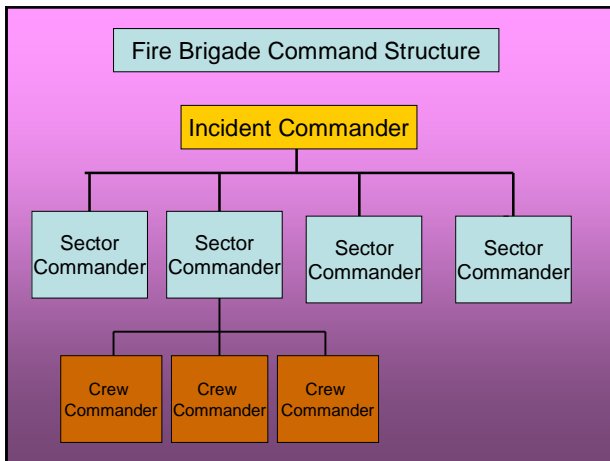
PTO

Painting: Poste by Van Gough	Canvas: Mount	Sticks: Damaged	Inventory No: 1001
Frame: As is	Condition: Good	Notes: None	
Pack As is	Dry and Pack	Keep wet and Press	Wash then Dry

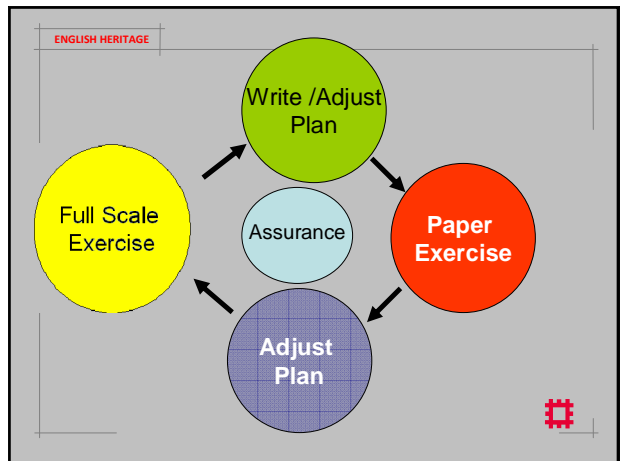
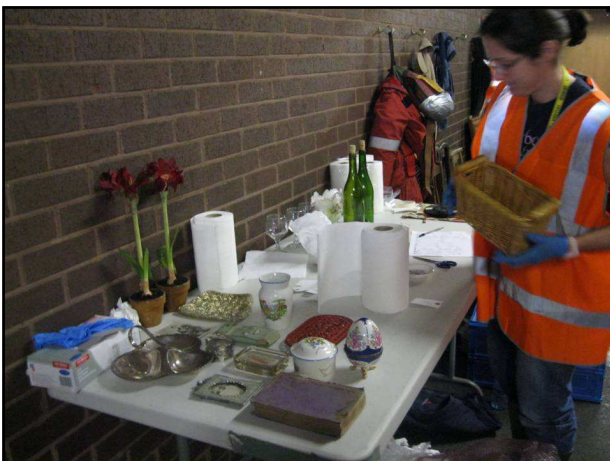














Training With The Fire Service



Maintaining Plans		SCENARIO
●	A nearby plastics factory is experiencing a major fire which is producing black sticky particulates and elevated levels of sulphur dioxide. The wind is blowing in the direction of the Engine House and Archive.	
●●	A disturbed person has just sprayed the contents of two red boxes in the collection with a slightly acidic substance and is threatening further damage.	
●●●	The drains in Core 1 have been partially blocked for some time. In the last few minutes the problem of flooding and raw sewage has become apparent to anyone who is in the building. The 'bad eggs' smell associated with hydrogen sulphide is very noticeable.	
●●●●	There has been a small earth tremor and subsidence has affected the Archive. The shelving has been badly destabilised and although nothing has fallen, it is only a matter of time.	
●●●●●	The fire alarm has just gone off. There is a smell of burning in Core 2, but the site of the fire is not immediately obvious.	
●●●●●●	An aggregate train has jumped the points on the Cheltenham line and it has crashed into the side of the Archive building causing instability, partial collapse and damage to the plant room.	

103 out of 134 Plans Delivered

Cross Organisation Help and Liaison

Salvage Equipment

Steve Emery  
Fire Safety Adviser for English Heritage  
[Steve.emery@english-heritage.org.uk](mailto:Steve.emery@english-heritage.org.uk)  
[iep@english-heritage.org.uk](mailto:iep@english-heritage.org.uk)